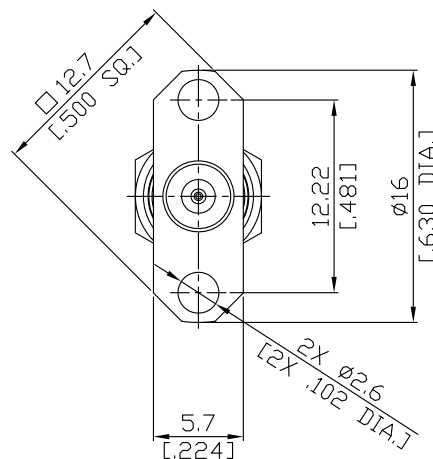
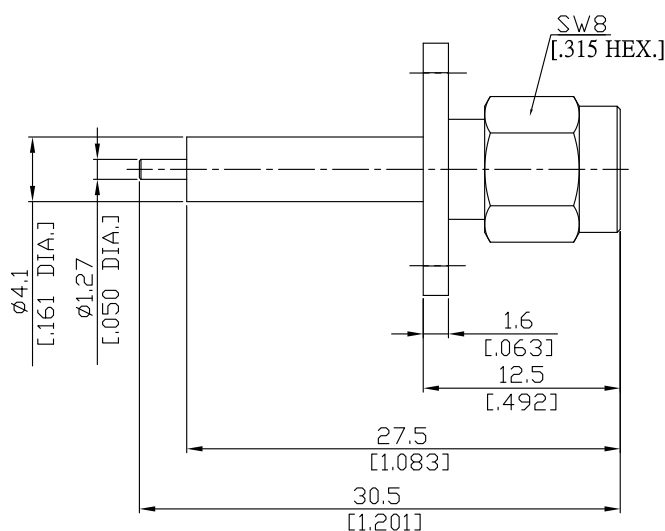


SMA plug (male) Connector Solder Attachment 2 Hole Flange Mount  
Stub Terminal, 12.22mm (.481 inch) Hole Spacing DC-18GHz VSWR1.30

## SMA1GTA50-3050A / 111



All dimensions are in mm [inch]

Tolerances according to DIN ISO 2768-mH

### Interface

According to

IEC 61169-15; MIL-STD-348B/310

### Electrical Data

|  |                      |
|--|----------------------|
| Impedance                                      | 50 Ω                 |
| Frequency                                      | DC to 18 GHz         |
| VSWR (Return Loss)                             | ≤ 1.30 (≥ 17.7 dB)   |
| Insertion Loss                                 | ≤ 0.05 x √F (GHz) dB |
| Insulation Resistance                          | ≥ 5 GΩ               |
| Center Contact Resistance                      | ≤ 3 mΩ               |
| Outer Contact Resistance                       | ≤ 2 mΩ               |
| Test Voltage                                   | 1000 V rms           |
| Working Voltage (at sea level)                 | 480 V rms            |
| Power Handling (at 20 °C, sea level, VSWR 1.0) | ≤ 200 W @ 2 GHz      |

### Material And Plating

| Piece Parts    | Material        | Plating  |
|----------------|-----------------|--|
| Centre contact | Brass           | Gold plating, 3 pinch<br>(Non-magnetic nickel-phosphorus underplating, 80 pinch) |
| Body           | Brass           | Gold plating, 3 pinch<br>(Non-magnetic nickel-phosphorus underplating, 80 pinch) |
| Insulator      | PTFE            |  |
| Gasket         | Silicone Rubber |  |
| Coupling nut   | Brass           | Gold plating, 3 pinch<br>(Non-magnetic nickel-phosphorus underplating, 80 pinch) |

SMA plug (male) Connector Solder Attachment 2 Hole Flange Mount  
Stub Terminal, 12.22mm (.481 inch) Hole Spacing DC-18GHz VSWR1.30

## SMA1GTA50-3050A / 111

### Mechanical Data

|                                   |                  |
|-----------------------------------|------------------|
| Coupling mechanisms               | Screw-lock       |
| Mating Cycles                     | ≥ 500            |
| Centre Contact                    | Soldered         |
| Terminal Type                     | Stub             |
| Captivated Type                   | Mechanical       |
| Center Contact Captivation: axial | ≥ 27 N           |
| radial                            | ≥ 3 Ncm          |
| Coupling Test Torque              | max. 1.7 Nm      |
| Recommended Torque                | 0.8 Nm to 1.1 Nm |

### Environmental Data

|                     |                                 |
|---------------------|---------------------------------|
| Temperature Range   | -65°C to +165°C                 |
| Thermal shock       | MIL-STD-202, Meth. 107, Cond. B |
| Corrosion           | MIL-STD-202, Meth. 101, Cond. B |
| Vibration           | MIL-STD-202, Meth. 204, Cond.D  |
| Shock               | MIL-STD-202, Meth. 213, Cond. I |
| Moisture Resistance | MIL-STD-202, Meth. 106          |
| RoHS                | compliant                       |

### Packing

Single or 100